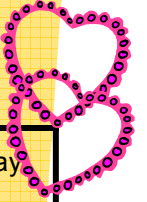
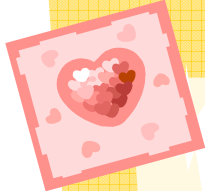


# THE ZONE

FEBRUARY 2012  
Calendar



| Sunday  | Monday  | Tuesday   | Wednesday   | Thursday   | Friday   | Saturday   |
|---|---|---|---|--|--|--|
| <b>School in Orange</b><br><b>Special event in Purple</b><br><b>Regular Zone programming in Pink</b>                          |   |   | <b>1</b><br>10-12 Create with Hole in the Wall<br>1-2 SCHOOL<br>2-4 wood works<br>5:30-7:30 Mural making                        | <b>2</b><br>10-12 Bookmarks<br>1-2 SCHOOL<br>2-4 Horticulture<br>5:30-7:30 Photomania  | <b>3</b><br>10-12 Computer Animation<br>1-2 SCHOOL<br>2-4 Create with Hole in the Wall<br>5:30-7:30 Friday Flubber           | <b>4</b><br>1-3:30 Salt Card   |
| <b>5</b><br>1:00-3:30 CD creatures  | <b>6</b><br>10-12 Paper Crafts<br>1-2 SCHOOL<br>2-4 Drawing<br>5:30-7:30 PoArtry                                    | <b>7</b><br>10-12 Tournament Tuesday<br>1-2 SCHOOL<br>2-4 Sand painting<br>5:30-7:30 Symbols                        | <b>8</b><br>10-12 Create with Hole in the Wall<br>1-2 SCHOOL<br>2-4 Scratch Art<br>5:30-7:30 Hand Casting                       | <b>9</b><br>10-12 Game Time<br>No school<br>2-4 Project Sunshine Cooking<br>5:30-7:30 Collage  | <b>10</b><br>10-12 mystery scene<br>1-2 SCHOOL<br>2-4 Create with Hole in the Wall<br>5:30-7:30 Boxes                        | <b>11</b><br>1:00-3:30 Bookmarks   |
| <b>12</b><br>1:00-3:30 Puppet Workshop<br> | <b>13</b><br>10-12 computer animation<br>1-2 SCHOOL<br>2-4 Valentine's Card making<br>5:30-7:30 Writing on the Wall | <b>14</b><br>10-12 Tournament Tuesday<br>1-2 SCHOOL<br>2-4 Medical Art Therapy<br>5:30-7:30 Heartful Messages       | <b>15</b><br>10-12 Create with Hole in the Wall<br>1-2 SCHOOL<br>2-4 origami<br>5:30-7:30 Paint Paint Paint                     | <b>16</b><br>10-12 model magic<br>1-2 SCHOOL<br>2-4 Horticulture<br>5:30-7:30 Clay Ckay Clay   | <b>17</b><br>10-12 Paper Bracelets<br>1-2 SCHOOL<br>2-4 Create with Hole in the Wall<br>5:30-7:30 Friday Night At the Movies | <b>18</b><br>1-3:30 Paper bag Puppets<br> |
| <b>19</b><br>1:00-3:30 Aquarium   | <br><b>President Day</b>         | <b>21</b><br>10-12 Tournament Tuesday<br>No school<br>2-4 mask Making<br>5:30-7:30 Romare Bearden and other artists | <b>22</b><br>10-12 Create with Hole in the Wall<br>No school<br>2-4 bubble head dogs<br>5:30-7:30 Sitting down with Frida Kahlo | <b>23</b><br>10-12 Puzzle making<br>No SCHOOL<br>2-4 Horticulture<br>5:30-7:30 Sculpting the Absurd  | <b>24</b><br>10-12 Painting<br>No SCHOOL<br>2-4 Create with Hole in the Wall<br>5:30-7:30 Fears, Foes and Heroes             | <b>25</b><br>1-3:30 Handprint flowers  |
| <b>26</b><br>10:30-12:00 Draw a Bridge<br>1-3:30 Puppet Workshop  | <b>27</b><br>10-12 Sculpy Fun<br>1-2 SCHOOL<br>2-4 Clay Imagination<br>5:30-7:30 Word Village                       | <b>28</b><br>10-12 Tournament Tuesday<br>1-2 SCHOOL<br>2-4 Medical Art Therapy<br>5:30-7:30 Activities in playrooms | <b>29</b><br>10-12 Create with Hole in the Wall<br>1-2 SCHOOL<br>2-4 Sand Art<br>5:30-7:30 If I were King or Queen for the Day  |   |  |  |

FRC open Monday-Friday from  
9:30am-1:00pm & 2:00pm-6:30pm